

Treasured Moments

By

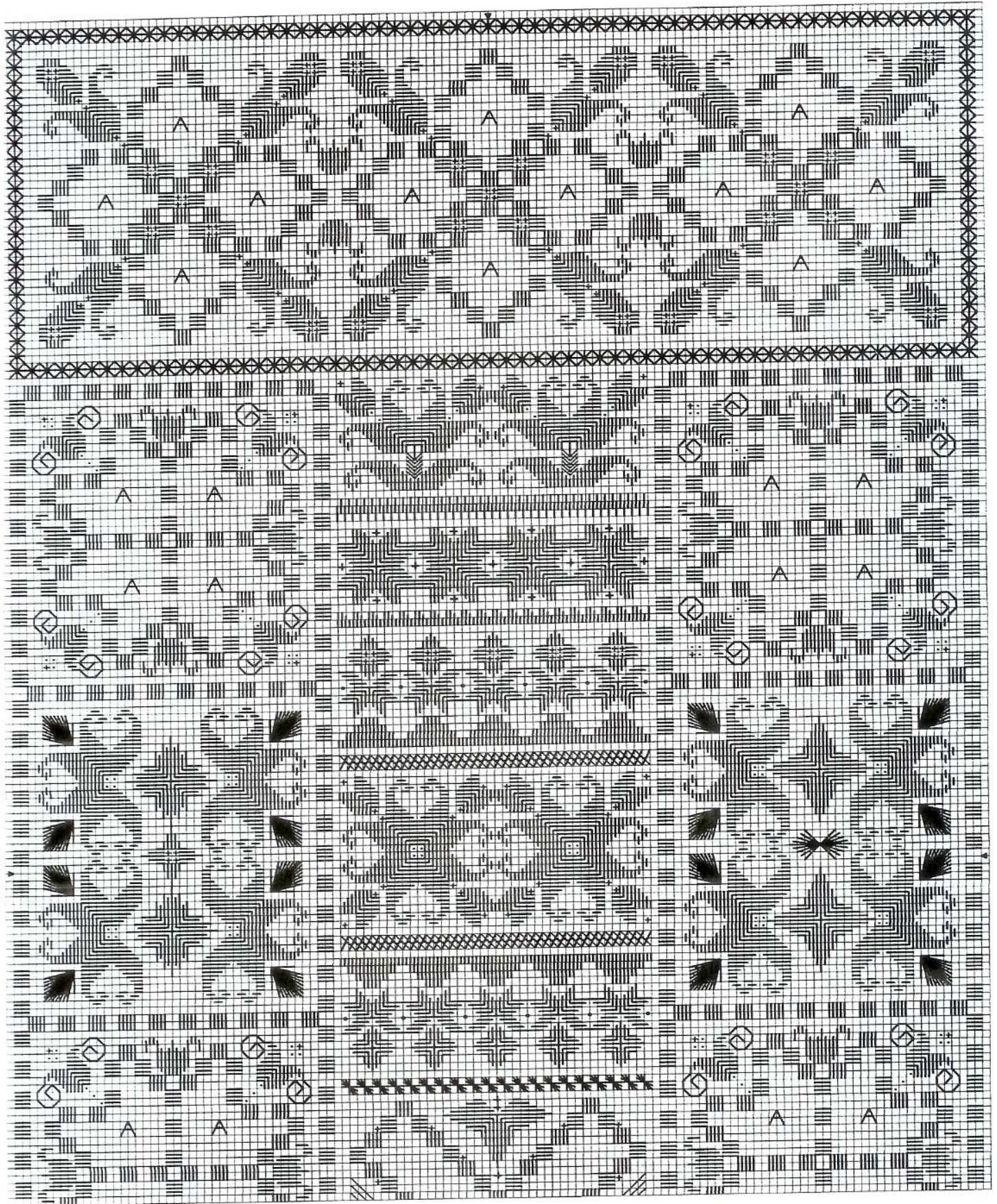
Judy Dixon

*How To Be
Seen Designs*

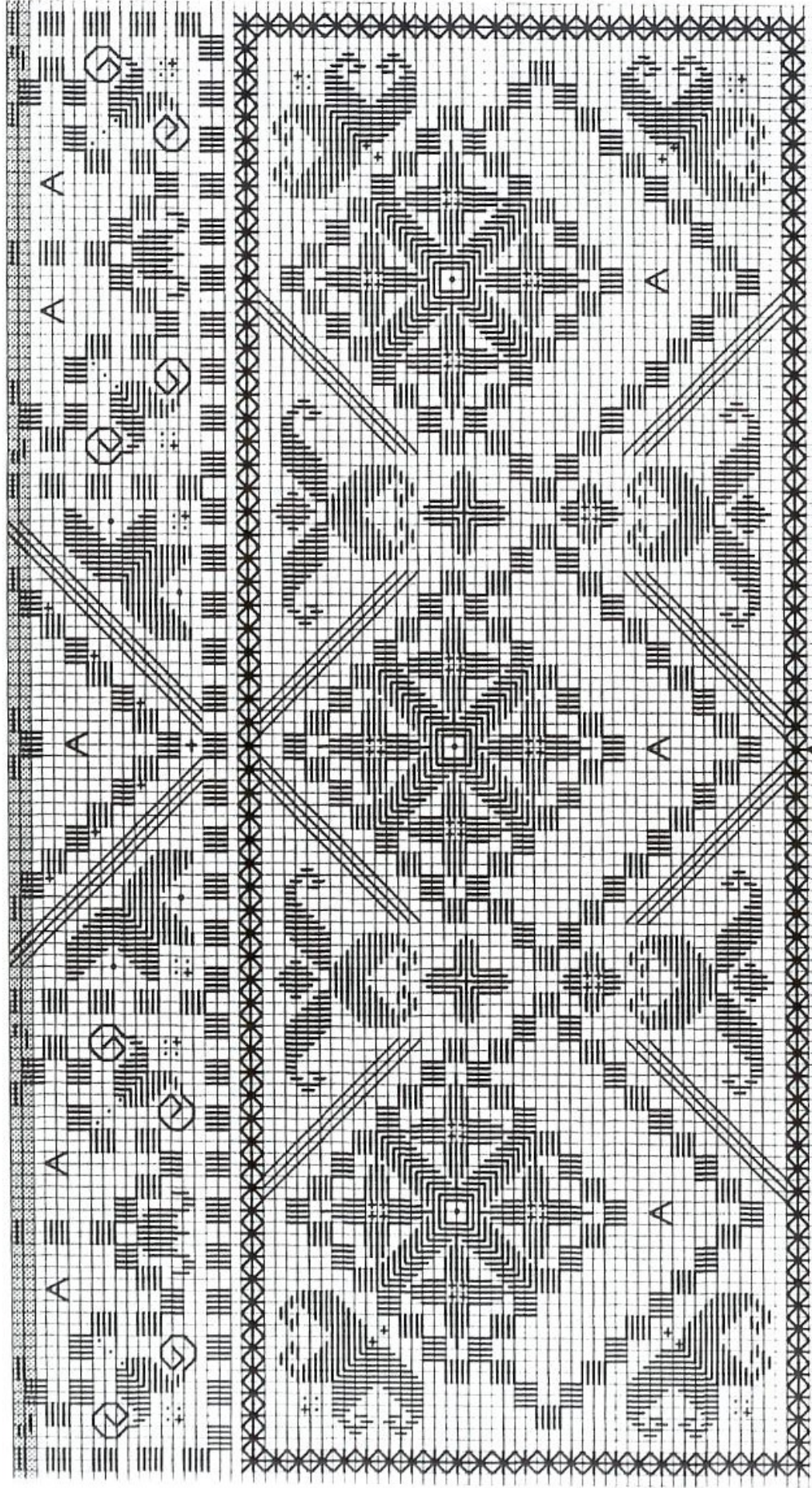
2004



Treasured Moments



Treasured Moments



Design By: Judy Dixon

Copyright © Sew To Be Seen Designs - 2004

Sew to be Seen Designs

By Judy Dixon

Treasured Moments

To Work This Design – You Will Need

32 Count Antique White Belfast Linen or 28 count Antique White Jobelan

Item	Number	Colour
South African Perle	#8	Ecu
DMC Perle	#12	Ecu
Thread Gatherer – Silken Pearl	15/3	Old Lace (2 Skeins)
Thread Gatherer – Silk 'N Colours	None	Southwest Sands
Dinky-Dye Perle	#8	Hawthorn
Pearsall's Silk	277	Pomegranite
Pearsall's Silk	001	Golden Brown
Gloriana Silk	105	Taupe
Mill Hill Bead Symbols		
+	42027	Champagne
.	40123	Soft Cream

Stitch Count = 126w x 224h

Design Size = 7 ¾ x 14 inches on 32 count

Cut fabric no less than 16 x 22 inches on 32 count

Notes

The Silks & Perle used in this design we're chosen carefully. Any other threads used will not have the same effect. I hope you enjoy stitching with them.

Please note: - every square on the main graph = two fabric threads. Note the change in scale on the stitch diagrams – graph lines = one fabric thread.

Refer to the main graph for stitch placement, but follow the stitch diagrams for special stitches.

I always use a frame; it helps keep an even tension for neat stitches.

The two shaded rows on page two are repeated rows from page one.

I strive to present this design error free, however human error can occur, if you have any comments you can e-mail me on judydixon@mursley.freemove.co.uk or why not visit my web-site at www.sewtobeseen.co.uk

This design has been prepared by Sew To Be Seen Designs. Any persons reproducing this design in any form complete or part there of must seek permission from Sew To Be Seen Designs or they will be infringing copyright.

To order Pearsall Silk

Tel No.

To Order South African Perle

Tel No.

email

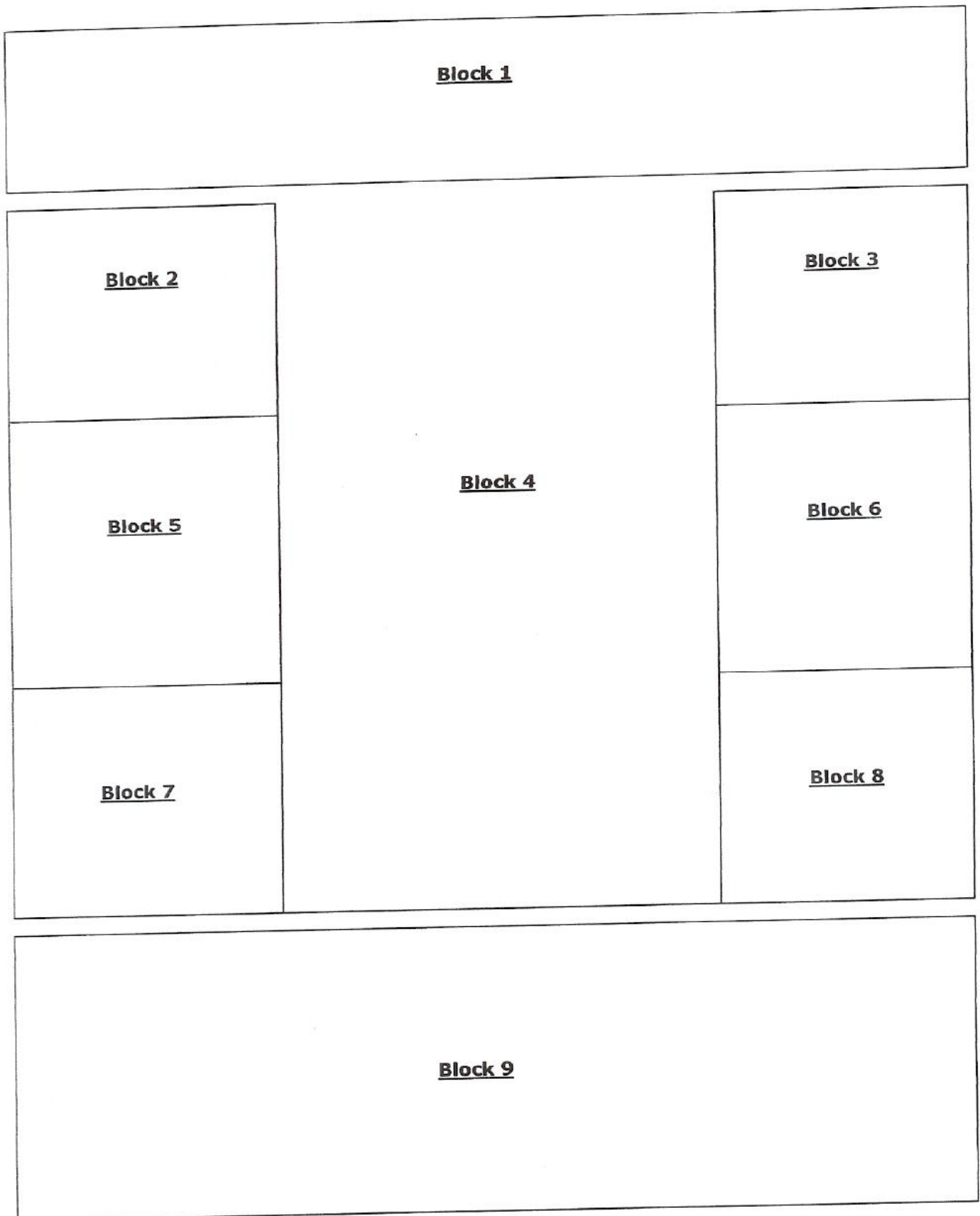
Pearsall's Ltd, Tancrad Street, Taunton
Somerset TA1 1RY
01823 447213 (UK)

Lorna Bateman, 5, Bennet Close
Alton, Hampshire GU34 2EL
01420 80595 (UK)
lorna@varigalore.com

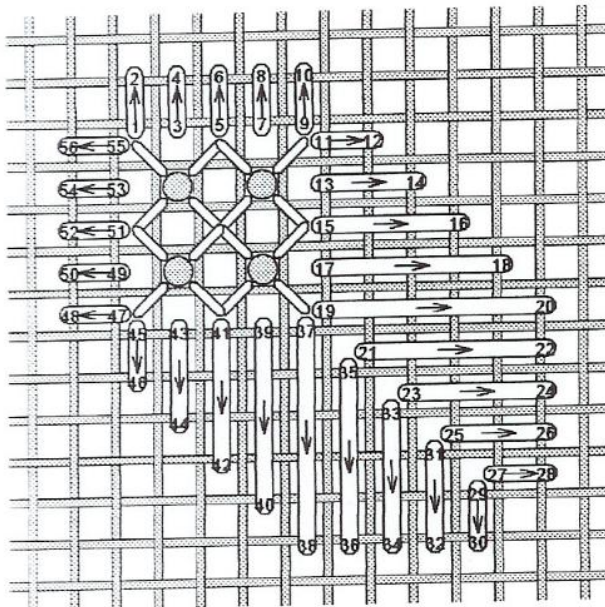
Design By: Judy Dixon

Copyright © Sew To Be Seen Designs - 2004

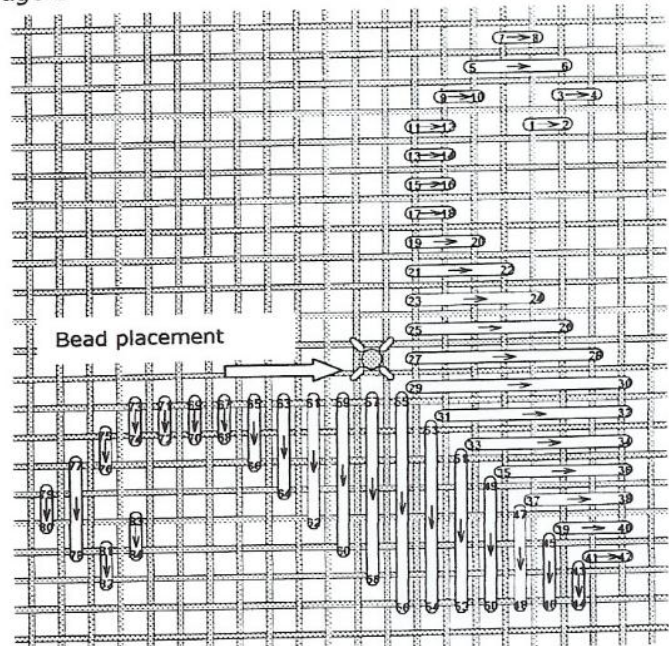
Treasured Moments
Block Layout.



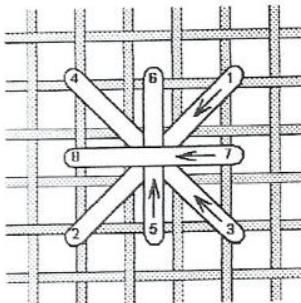
Treasured Moments
Stitch Diagrams
Page 1



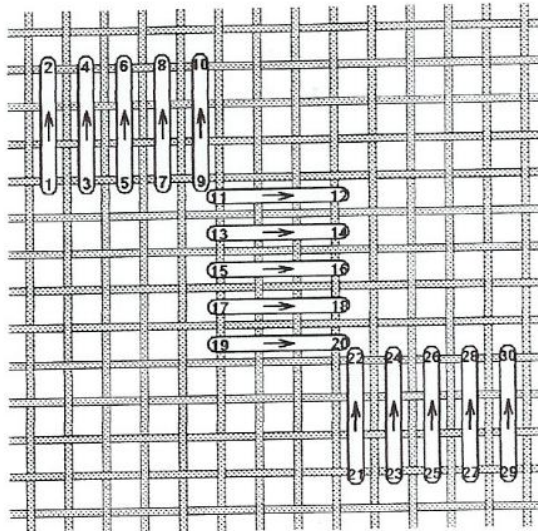
Corner Motifs-Small. Worked in Block 1 (12 in total) Diagram shows full motif. Use two strands of 001. Note bead placement.



Corner Motif-Large. Worked in Block 1 (12 in total) Use two strands of 277. Diagram shows full motif.

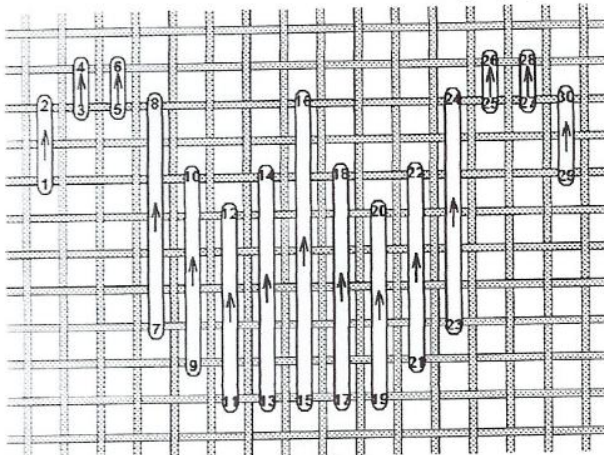


Smyrna Cross.
Outside border in Blocks 1 & 9
Use one strand of Perle #8-Ecru for each Block.



Kloster Blocks

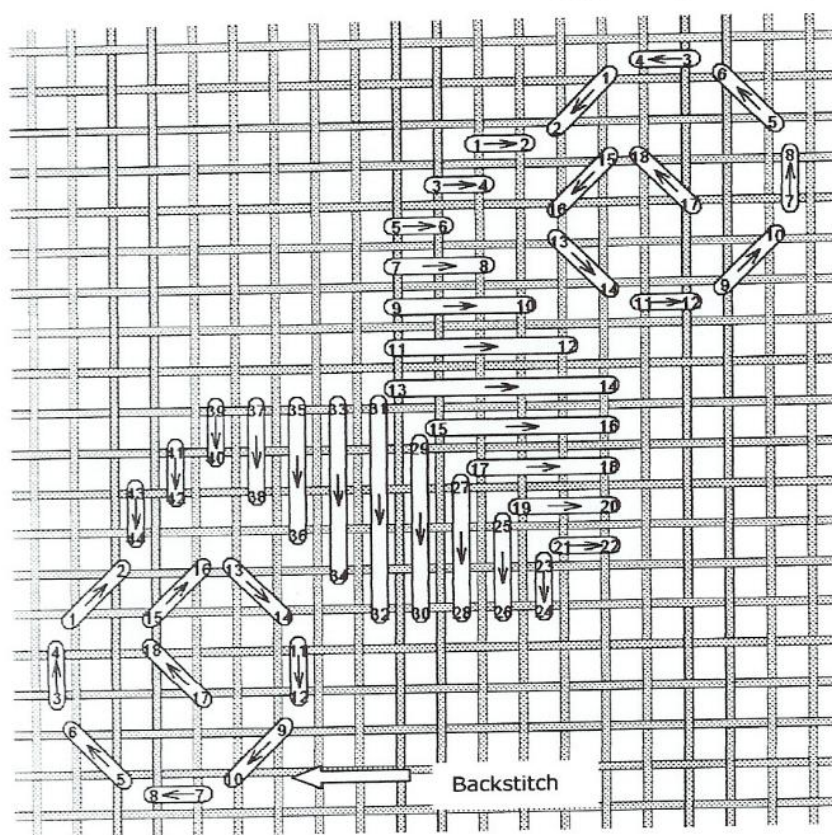
Use one strand of Thread Gatherer variegated Perle for the Hardanger sections in Blocks 1 & 9. Use the same thread for the outer border Kloster stitches in Blocks 2, 3, 5, 6, 7 & 8. Once worked, this will give you placement for the small centre Sampler.



Flower Tulip - Worked in Blocks 1, 2, 3, 7 & 8 (20 in total)

Use two strands of Taupe for all 20.

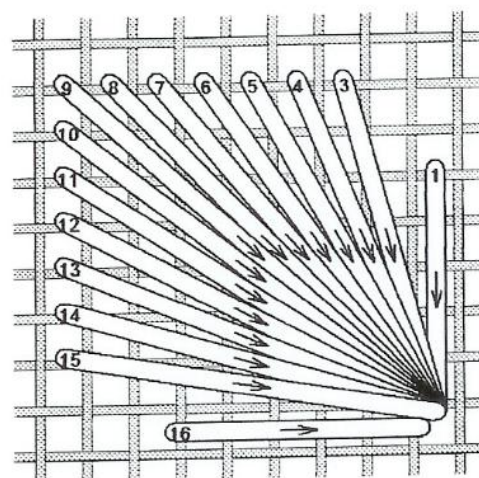
Treasured Moments
Stitch Diagrams –Page 2



Corner Motif -Small – with Backstitch.
Worked in Blocks 2, 3, 7 & 8.

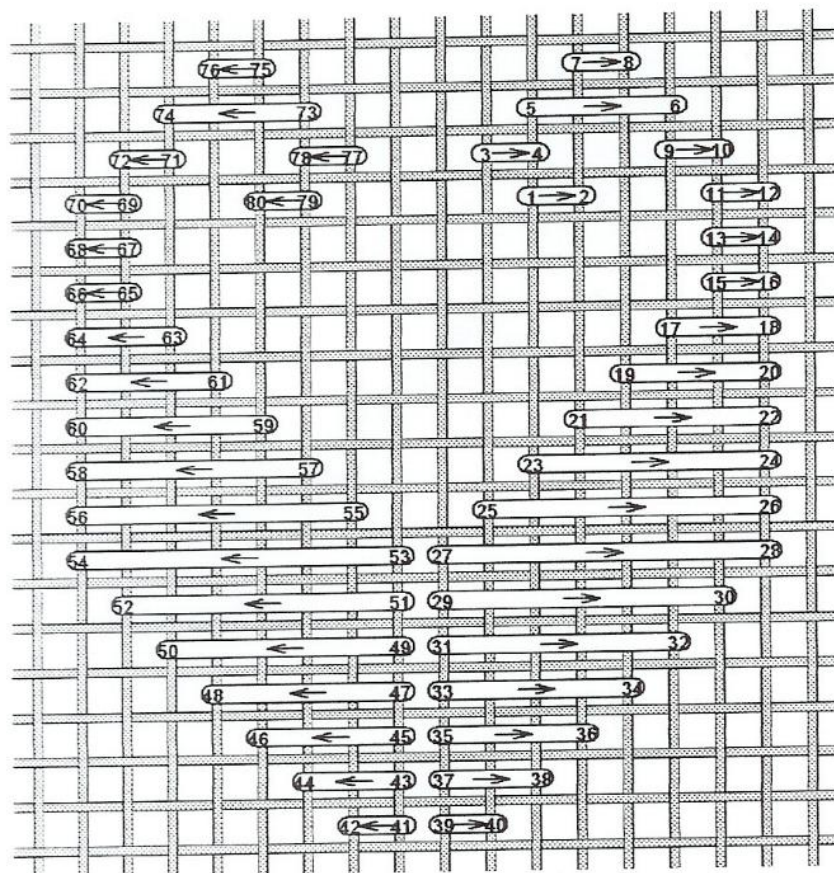
Use one strand of Perle #8-Hawthorn for each one.

For the Backstitch on these Motifs, use one strand of Taupe for each vine.



Leaf Stitch – worked in Blocks 5 & 6
(16 in total)

Use two strands of Taupe for each one.



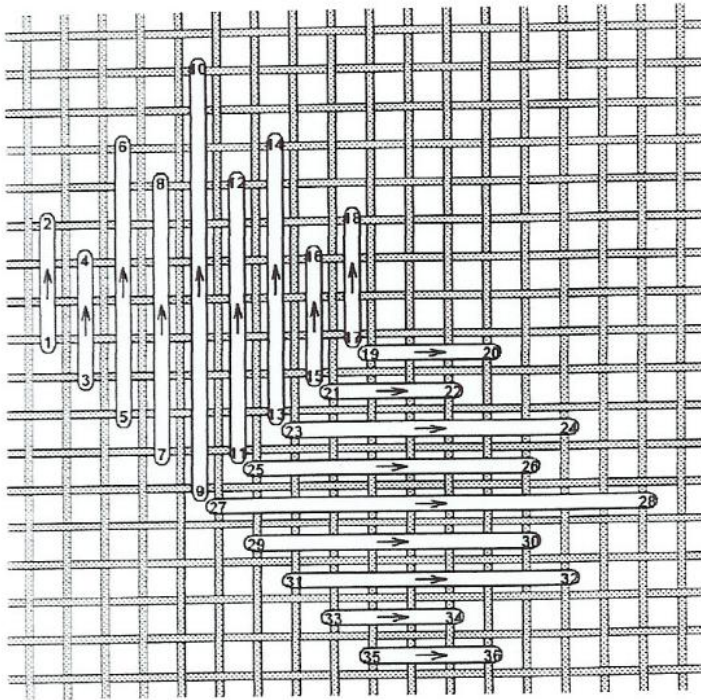
Three Quarter Motif – Worked in Blocks 5, 6 & 4. (8 Three Quarter Motifs in total)
(2 Full Motifs in Block 4 – Centre)

Please note- the diagram on the left is shown in one part. There are 3 of these motifs joined together to form the Three Quarter Motifs. Turn the diagram anti clockwise to work each one. Use one strand of Perle #8 in Blocks 5 & 6.

In centre Block 4, row 8 use two strands of 001.

In Block 4 (centre) there are 4 of these motifs joined together to form the full Motif. Turn the diagram anti clockwise to work each section.

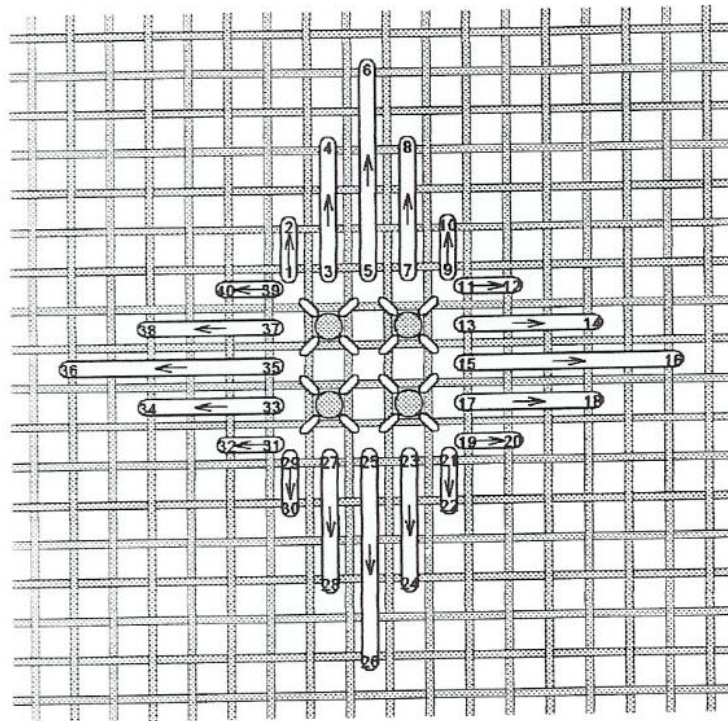
Treasured Moments
Stitch Diagrams –Page 3



Satin Motif – Worked in Block 5 (2 in total)

Use two strands of 277.

Please note that the diagram only shows one half of the motif. Turn the diagram clockwise to complete the full motif. Don't pull this stitch to tight.

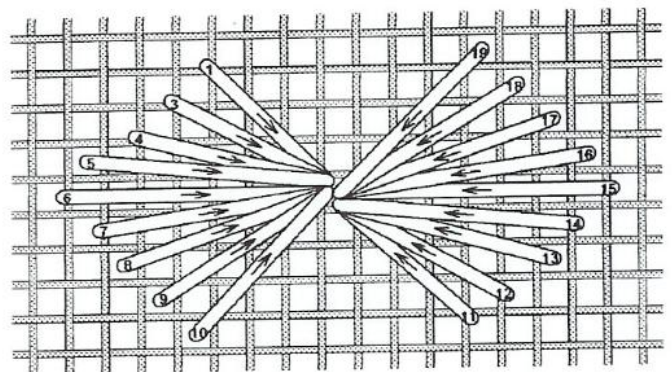


Kloster Block Variation – Worked in Block 5
(1 in total).

Diagram shows full stitch.

Use two strands of Southwest Sands.

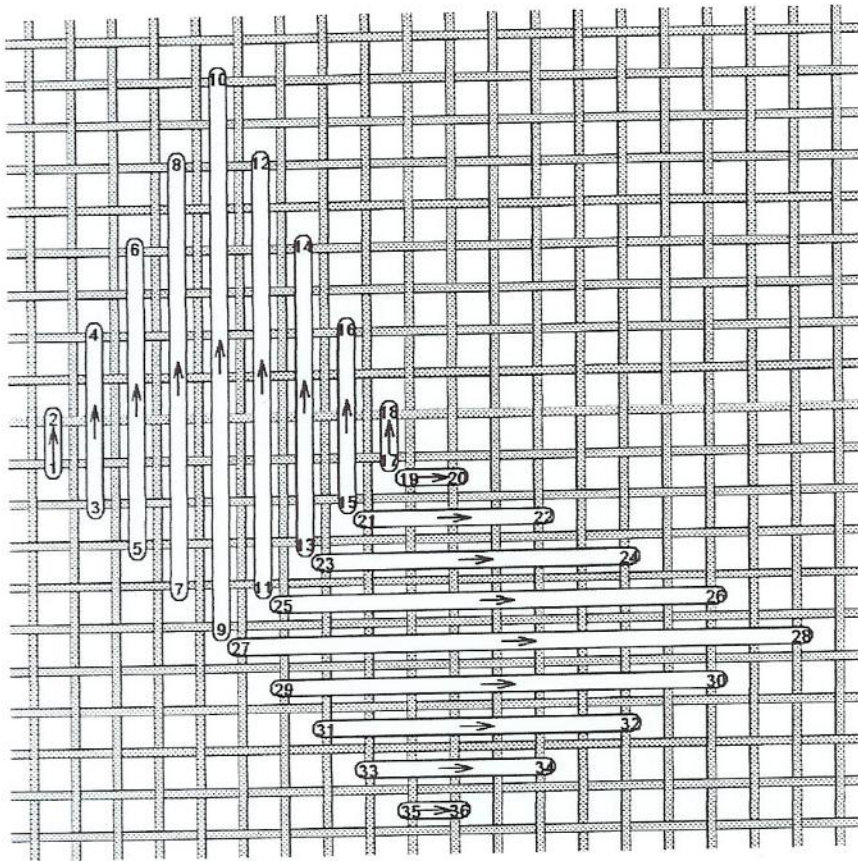
Attach four beads to the centre.



Half Eyelet Variation – Worked in Block 6.
(1 in total)

Use two strands of Southwest Sands

Treasured Moments
Stitch Diagrams –Page 4



Satin Motif – Worked in block 6.
(2 in total).

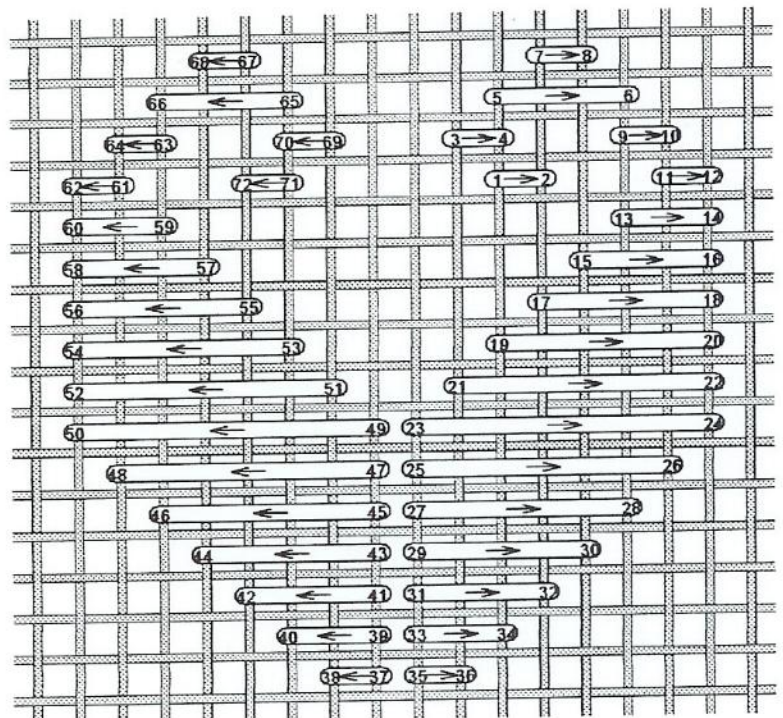
Please note: The diagram on the left shows only one half of the stitch. Turn the diagram clockwise to work the remaining stitch.

Use two strands of 277.

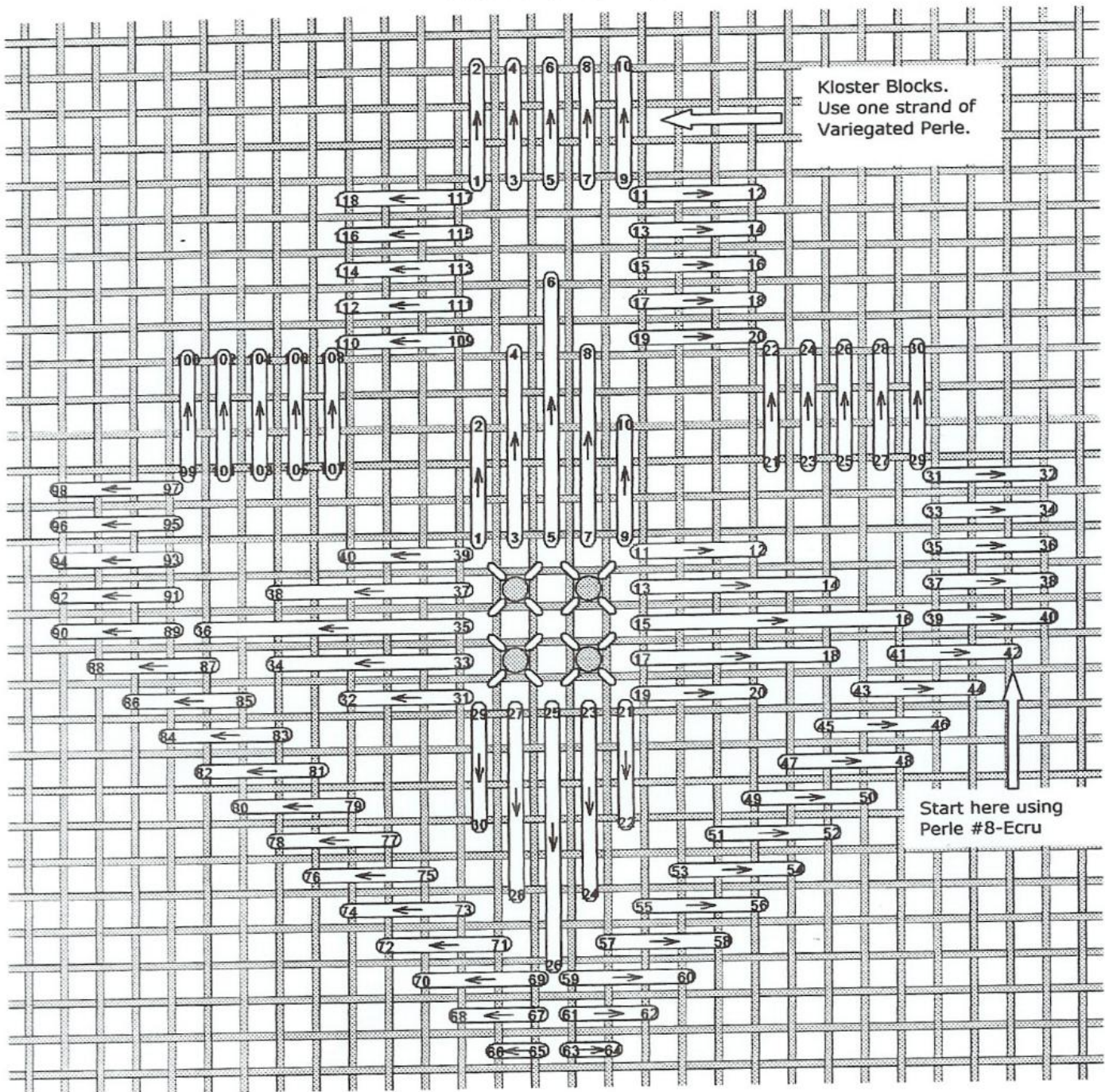
Corner Satin Motif – Worked in Block 9
(4 in total).

Please note: This Motif is slightly smaller than the ones you have previously stitched. The diagram on the right shows only one half of the stitch. Turn the diagram anti clockwise to complete the stitch motif.

Use one strand of Perle #8 –Hawthorn.

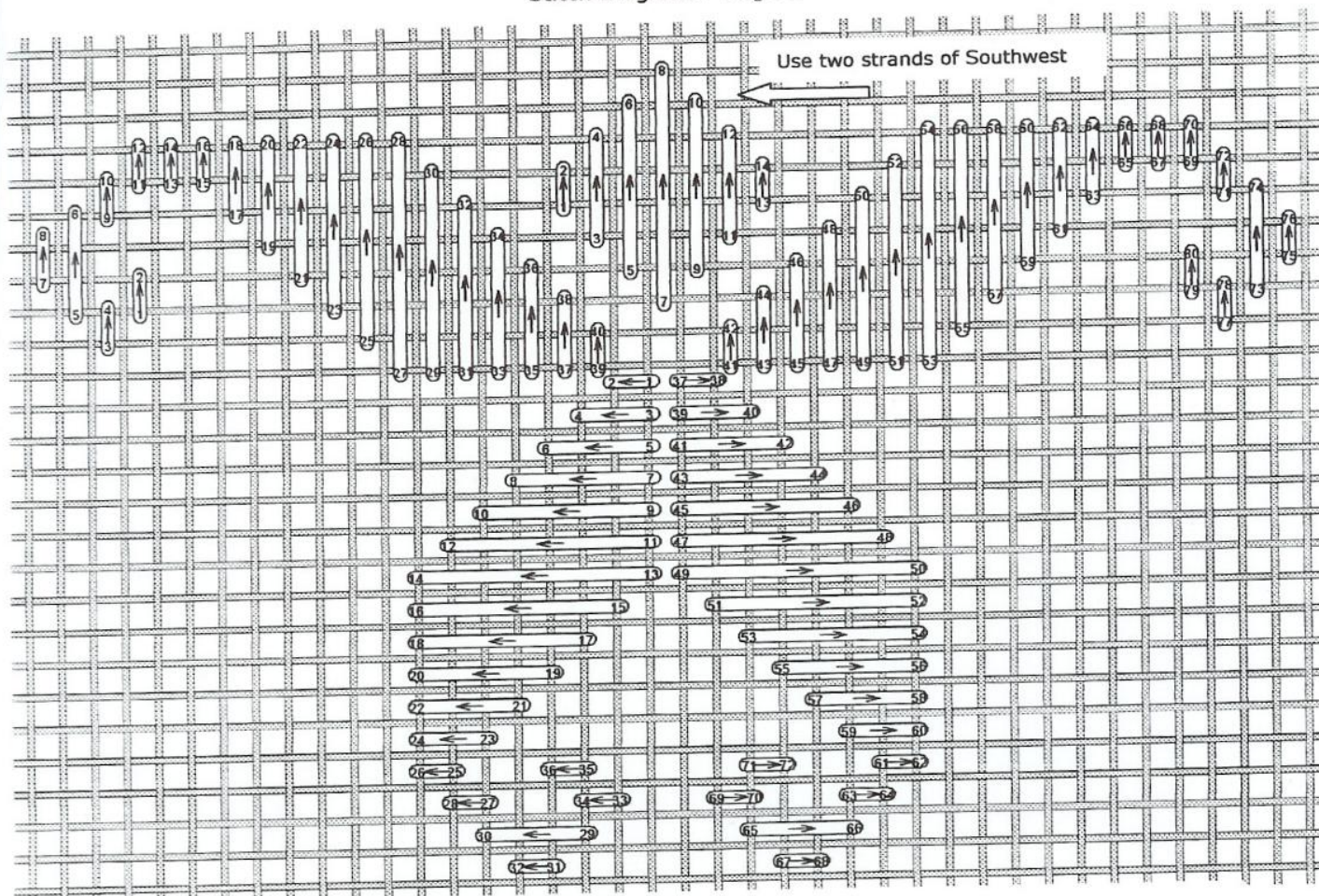


Treasured Moments
Stitch Diagrams –Page 5



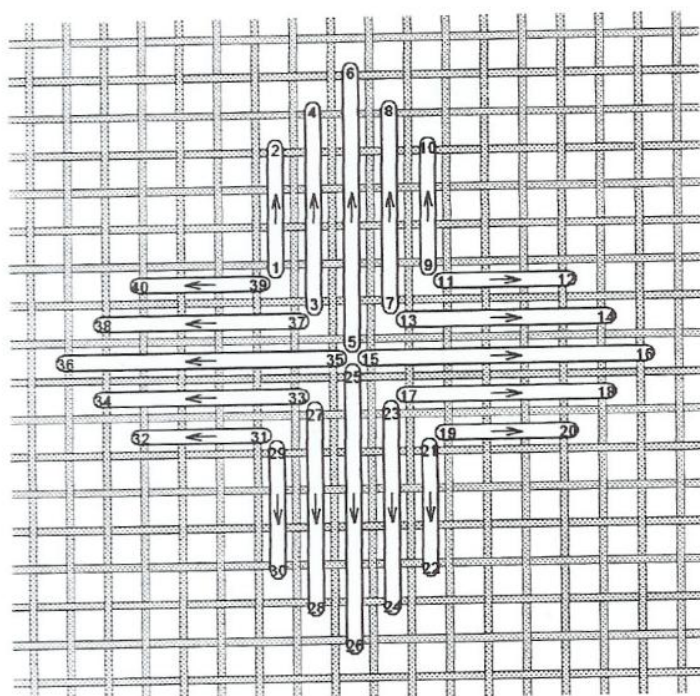
Diamond Kloster – With Kloster Flower. Worked in Block 9. (12 each in total, 4 to each section)
The above diagram shows how the Diamond Kloster is worked. Please note: there are 4 of these stitches in total to each section. There are 3 sections. Turn the diagram clockwise to complete the four full stitches. Work all Kloster Blocks by using one strand of Thread Gatherer variegated Perle. For the centre Satin stitches, use one strand of Perle #8-Ecru. For the centre Kloster Flower, use two strands of 277. Attach four beads to the centre of this flower. Attach one bead in the top centre.

Treasured Moments
Stitch Diagrams -Page 6



Satin Leaf Motif - Worked in Block 9. (4 in total)

Use two strands of Taupe. For the small Satin Diamond at the top, use two strands of Southwest Sands.
Work each one in the same way. Diagram shows full motif.



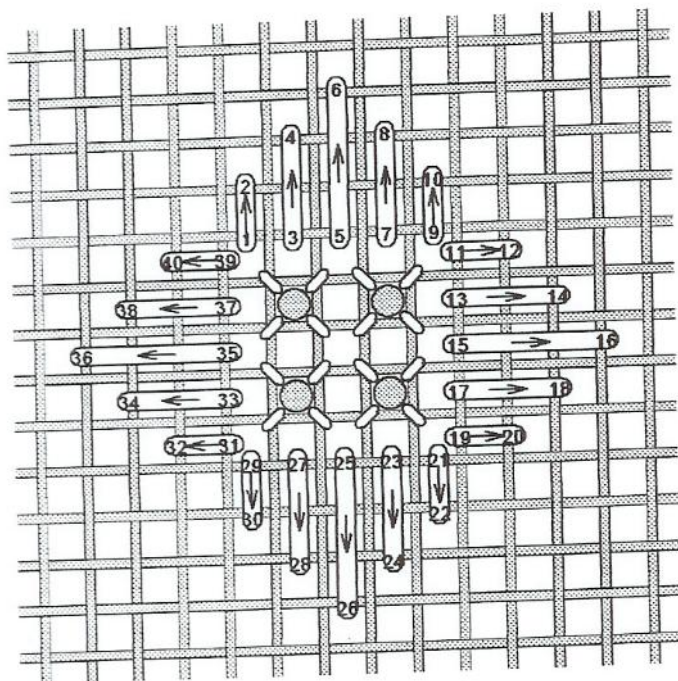
Satin Flower - Worked in Block 9. (2 in total)

Please note: The diagram on the left shows full stitch.

Use two strands of 001.
Try not to pull the Satin stitches to tight.

Each one is worked in the same way

Treasured Moments
Stitch Diagrams –Page 7



Small Satin Flower – Worked in Block 9. (2 in total).

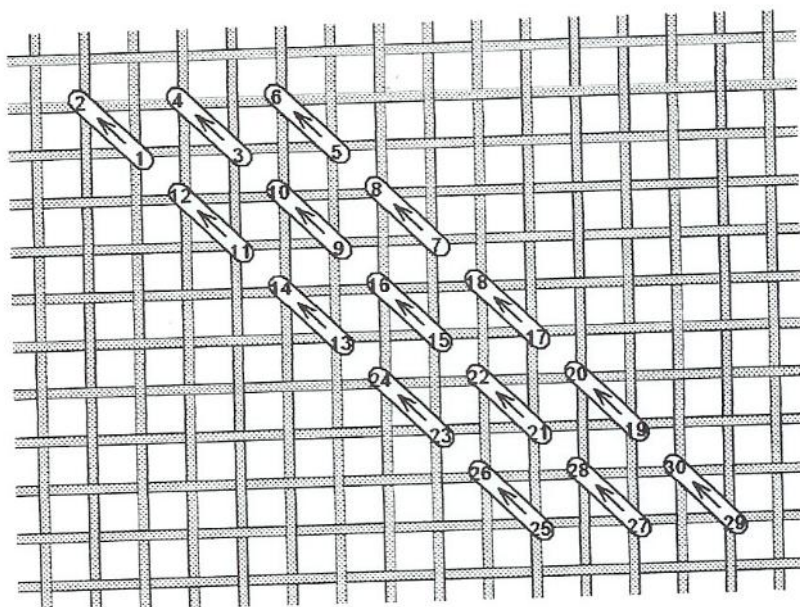
Diagram on the left shows full stitch.
Work this small Satin Flower by using two strands of 001.

Attach 4 beads to the centre.
Both of these stitches are worked in the same way.

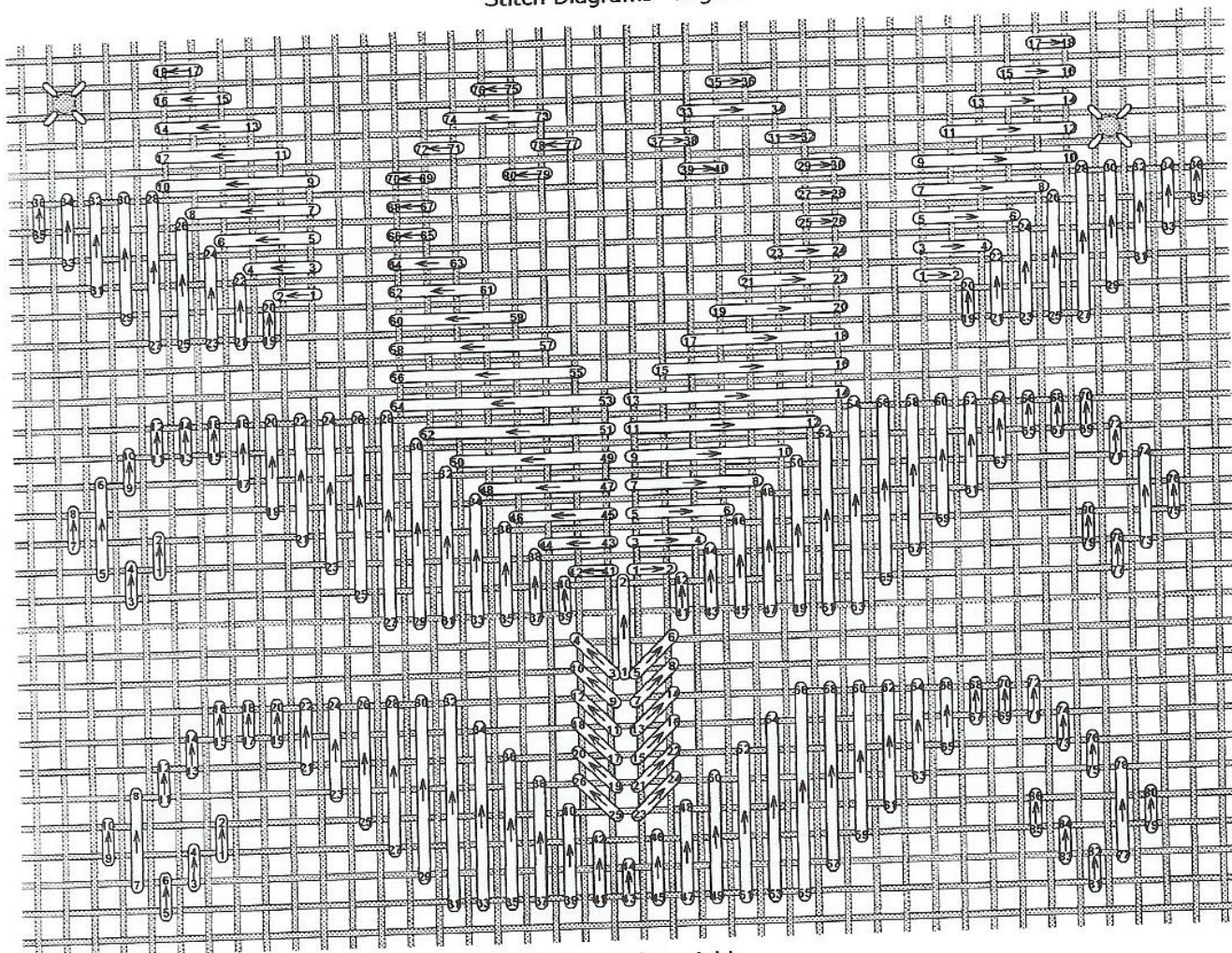
Cable Stitch – Worked in Blocks 4 & 9

Use one strand of Perle #8-Ecru for all the Cable Stitches in each Block.

Pull this stitch quite firmly, to create a lacy look.

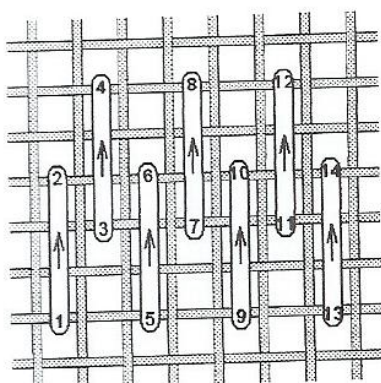


Treasured Moments
Stitch Diagrams - Page 8

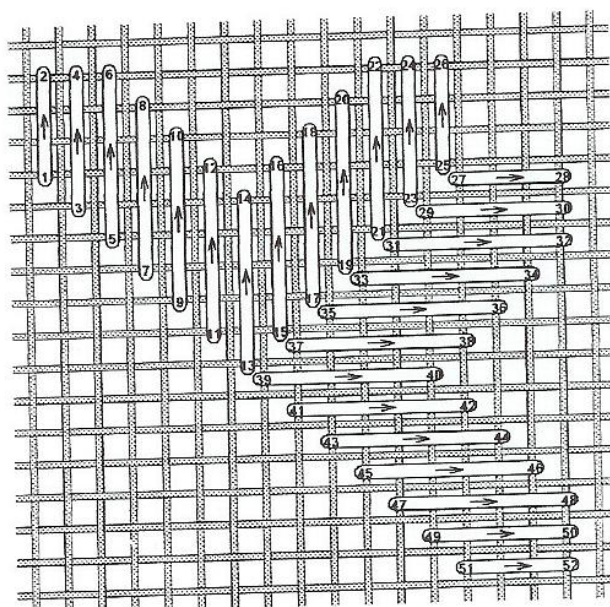


Centre Sampler - Block 4 Row 1 - Work each row from left to right.

Work the 4 tiny corner Motifs by using one strand of Perle #8-Hawthorn. Attach a bead to each one. Work the Backstitch stems by using one strand of Taupe. Work the Satin Flowers by using two strands of 001. Work the Backstitch stems by using one strand of Taupe. The Satin leaves use one strand of Perle #8-Ecru. Both worked in the same way, using the same thread. Attach beads.



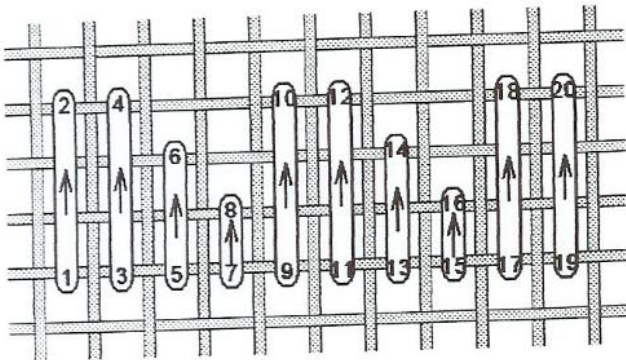
Satin Stitch - Row 2
Use two strands of Taupe.



Full Satin Motif - Row 3

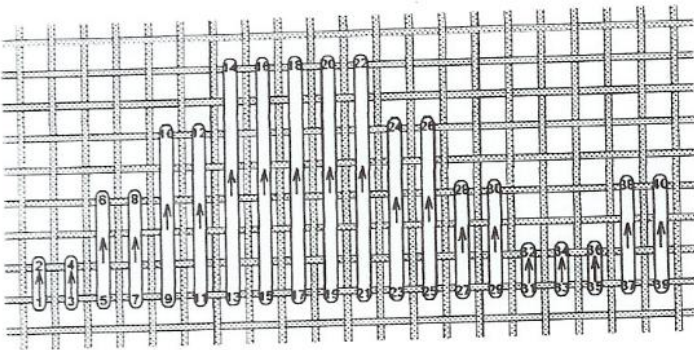
Use one strand of Perle #8-Ecru. Please note: The diagram on the left shows only one half of the stitch. Turn the diagram clockwise to work the other half. Attach beads.

Treasured Moments
Stitch Diagrams -Page 9



Satin Flower - Row 5

For the top small Satin flowers, use two strands of 001. Attach 4 beads to the centre.
For the second part, use one strand of Perle #8 - Ecu.
Attach beads according to bead symbols.
Diagram shows full stitch



Satin Stitch -Block 4 Rows 6 & 10

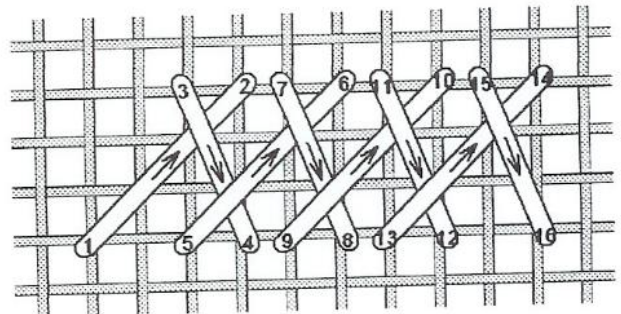
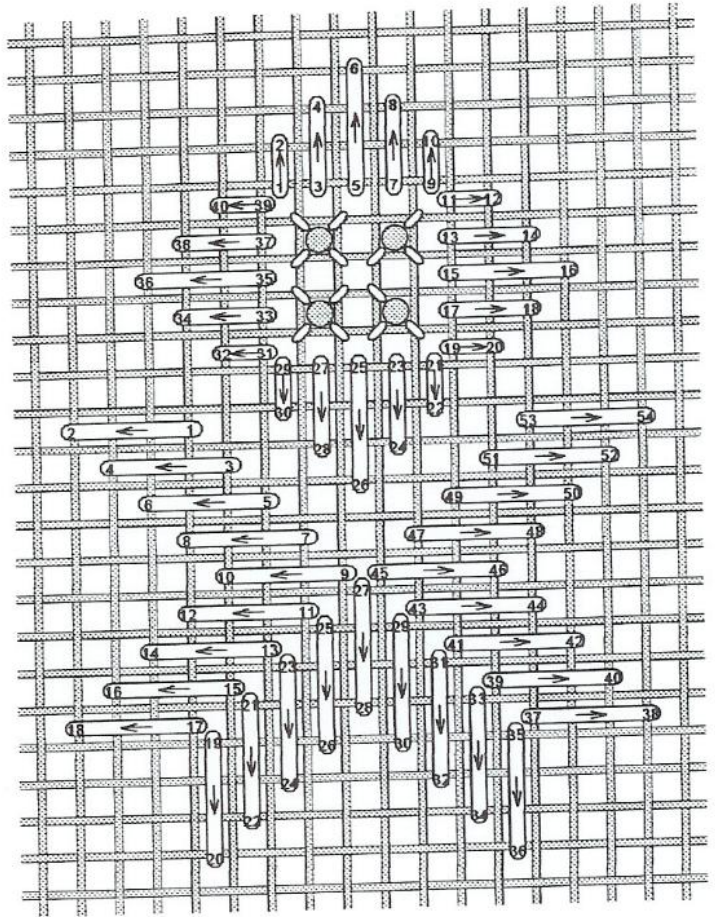
Use one strand of variegated Perle -Old Lace.
Work row 10 in the same way, only in reverse.

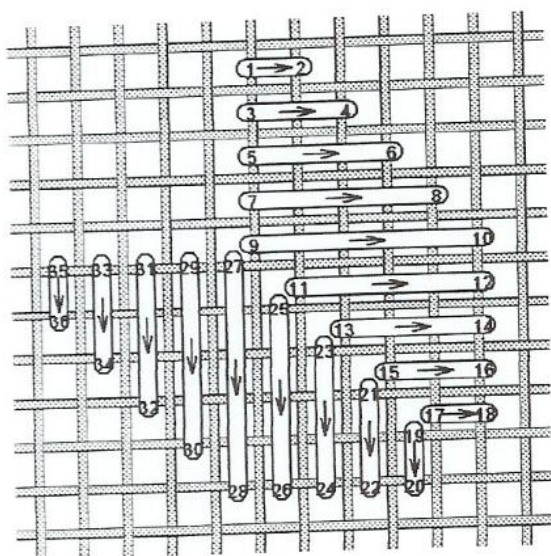
Upright Long arm Cross -Rows 7 & 9

Both rows worked in the same way. Use two strands of -Taupe

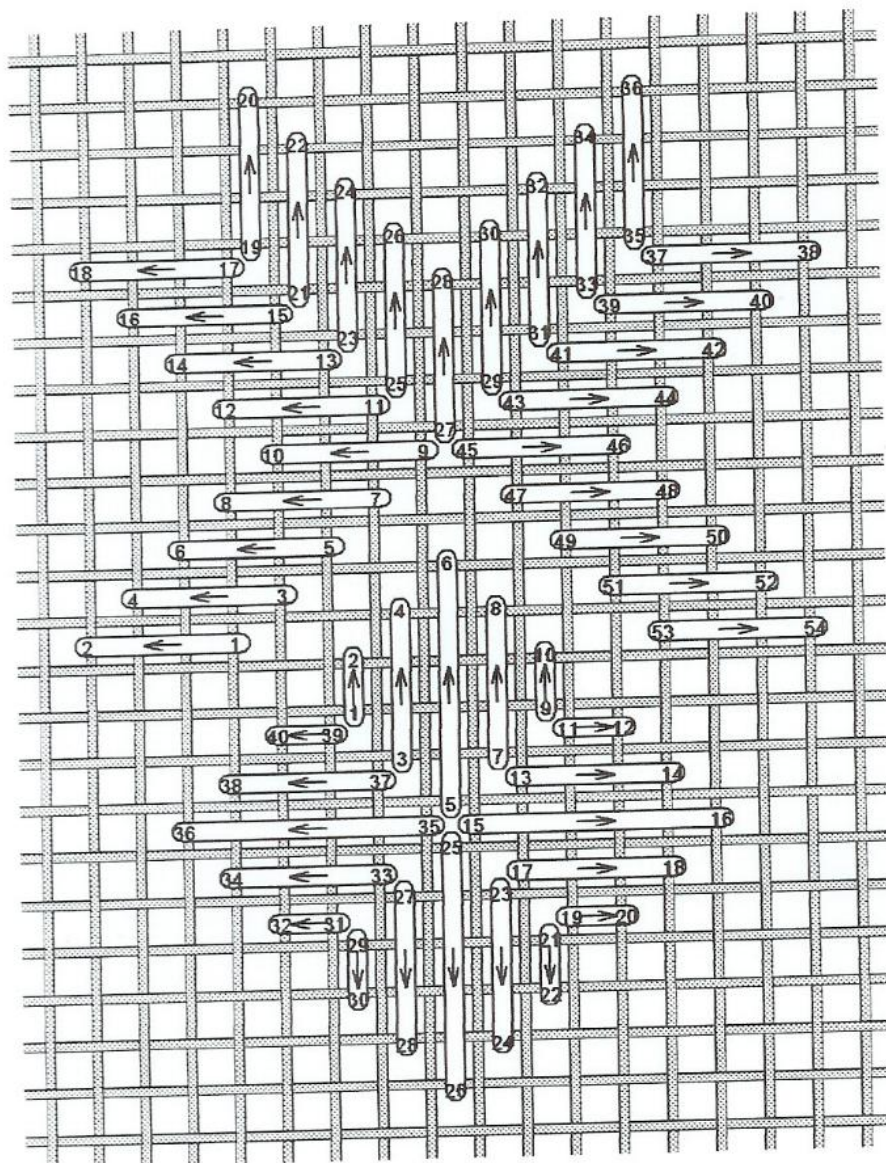
Satin Stitch -Block 4 - Row 4

Use two strands of Southwest Sands.
Work from left to right.





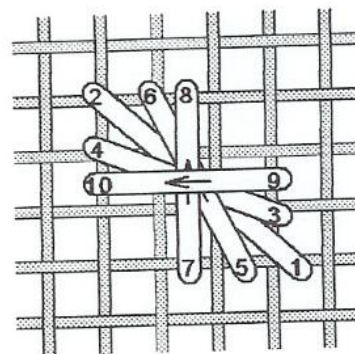
Corner Satin Motifs Small - Block 4 - Row 8 (8 in total). Please note; the diagram for the 2 large motifs in this row refer to page 2, to work this stitch. Attach beads.



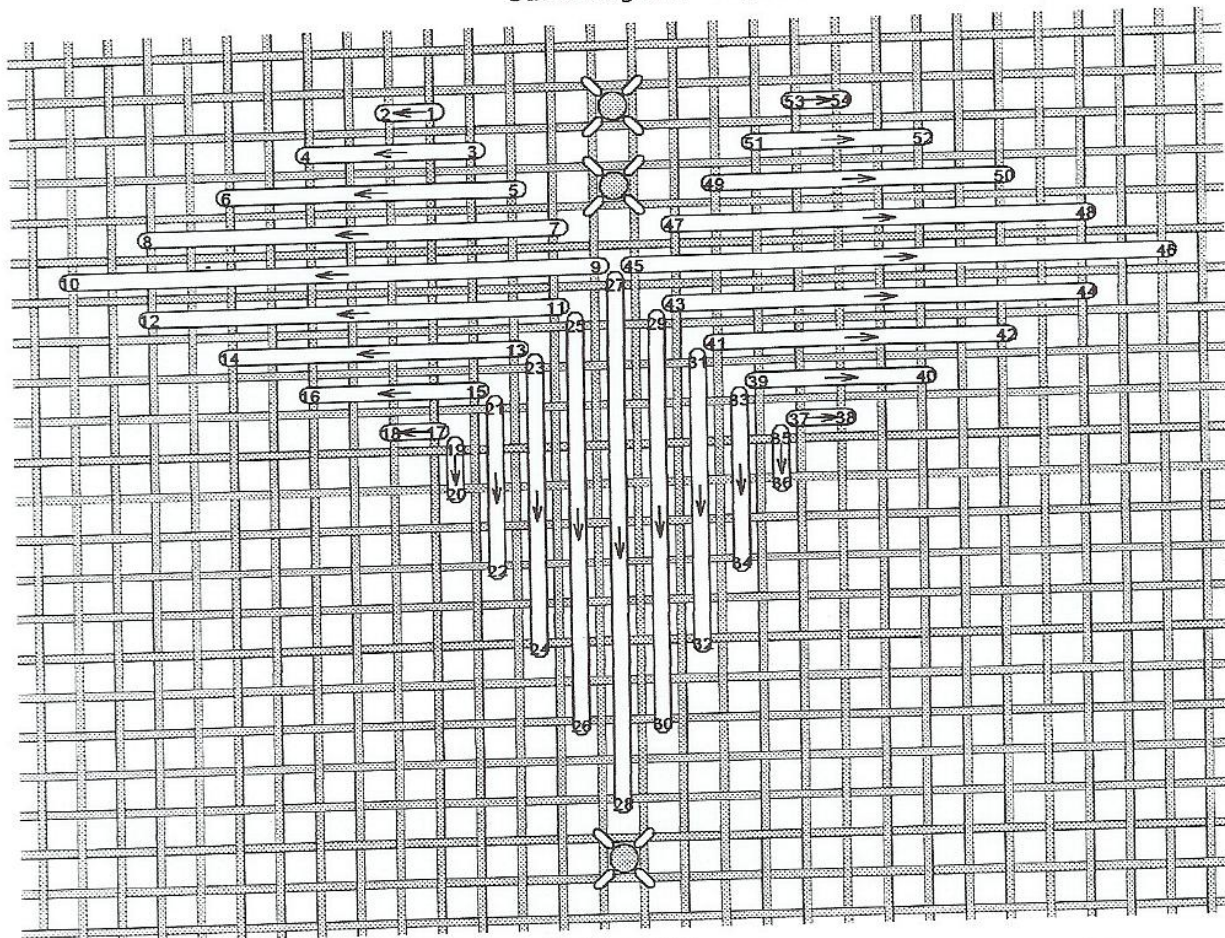
Satin Flower. Block 4 - Row 11.

Worked the same way as in row 5, using the same threads.

You will note that there are no beads to the centre of the small satin flower.

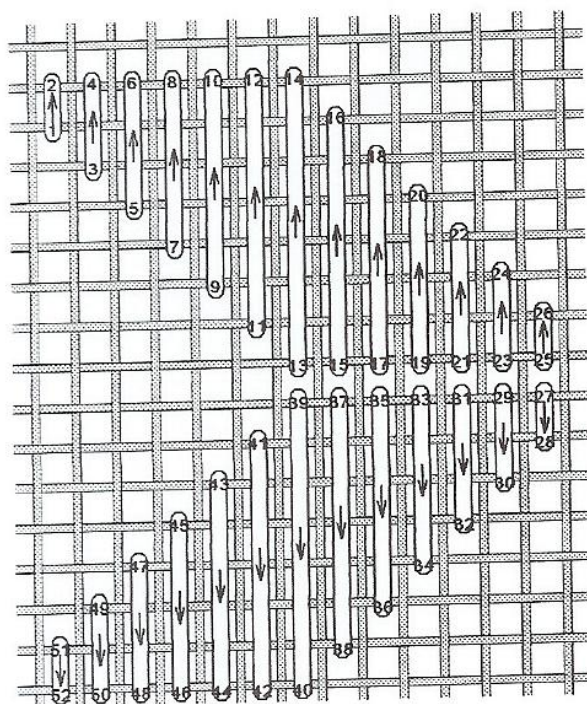


Fan Vault - Block 4 - Row 12. Use two strands of Southwest Sands. Diagram above shows full stitch.



Three Quarter Satin Motif – Block 4, Row 13 (one only)

Use two strands of 001. Note the bead placement on the above diagram.
To work, the Hardanger section, use one strand of Perle #8-Ecru. After cutting the Hardanger section, attach beads, using the bead symbols as a guide. For the Cable stitch, refer to page 7.



Corner Motif – Block 4 - Row 13. (2 in total)

Use two strands of Southwest Sands.

Please note: only half of this motif is shown. Turn the diagram anti clockwise, to work the other half.

Attach beads according to bead symbols.

Sew to be Seen Designs

By Judy Dixon

Treasured Moments

General Instructions -Page 12

- Block 1** Work the Smyrna Cross outside border. This gives a good placement guide for the remaining stitches. Work the three Hardanger sections. I always cut the fabric threads when all stitching has been completed. Work the motifs. Attach beads last.
- Block 2** Work the outside Kloster Satin stitch border first. Work the Hardanger section. Work the motifs.
- Block 3** Worked in the same way as block 2.
- Block 4** Start with row 1, working from right to left. Work your way down to row 13. I worked this block when blocks 2, 3, 5, 6, 7, & 8 have been completed. It made it easier to follow each row.
- Block 5** Work the outside Kloster Satin stitch border first. Work the motifs according to stitch diagrams.
- Block 6** Worked in the same way as block 5.
- Block 7** Worked in the same way as blocks 2 & 3
- Block 8** Worked in the same way as blocks 2, 3, & 7
- Block 9** Work the Smyrna Cross outside border. This gives a good placement guide for the remaining stitches. Work the motifs following the stitch diagrams. Work the Hardanger sections.

At this point, all stitching should now be completed.

Starting with block one, cut and withdraw all fabric threads in each Hardanger section. Cut carefully, work in a natural light, where ever possible. This limits the strain on your eyes.

Once the fabric threads have been withdrawn, wrap each of the bars using one strand of Perle #12-Ecru. Now working blocks 2, 3, 7, 8, 4 & 9 cut & withdraw the fabric threads in each Hardanger section. Wrap all bars using one strand of Perle #12-Ecru.

Once all the bars have been wrapped, attach all beads using the bead symbols as a guide. Use double cream sewing thread, and try not to travel too far across the back. This will make the beads loose and not firmly in place.

Check the Hardanger sections, making sure there are no loose threads showing at the front.

Check that all beads are firmly in place. It's always worth checking to, that you haven't missed out any stitches. This is a large design, and it's quite easy to overlook some stitches.

Sign your work in a colour of your choice, using one strand of thread.

Spray a mist of cold water to the back of your work, and press gently. Being careful not to disturb the beads. Your fabric and stitching will then look like new.

I do hope you have enjoyed stitching '*Treasured Moments*' -well done! - Judy

Design By: Judy Dixon

Copyright © Sew To Be Seen Designs - 2004